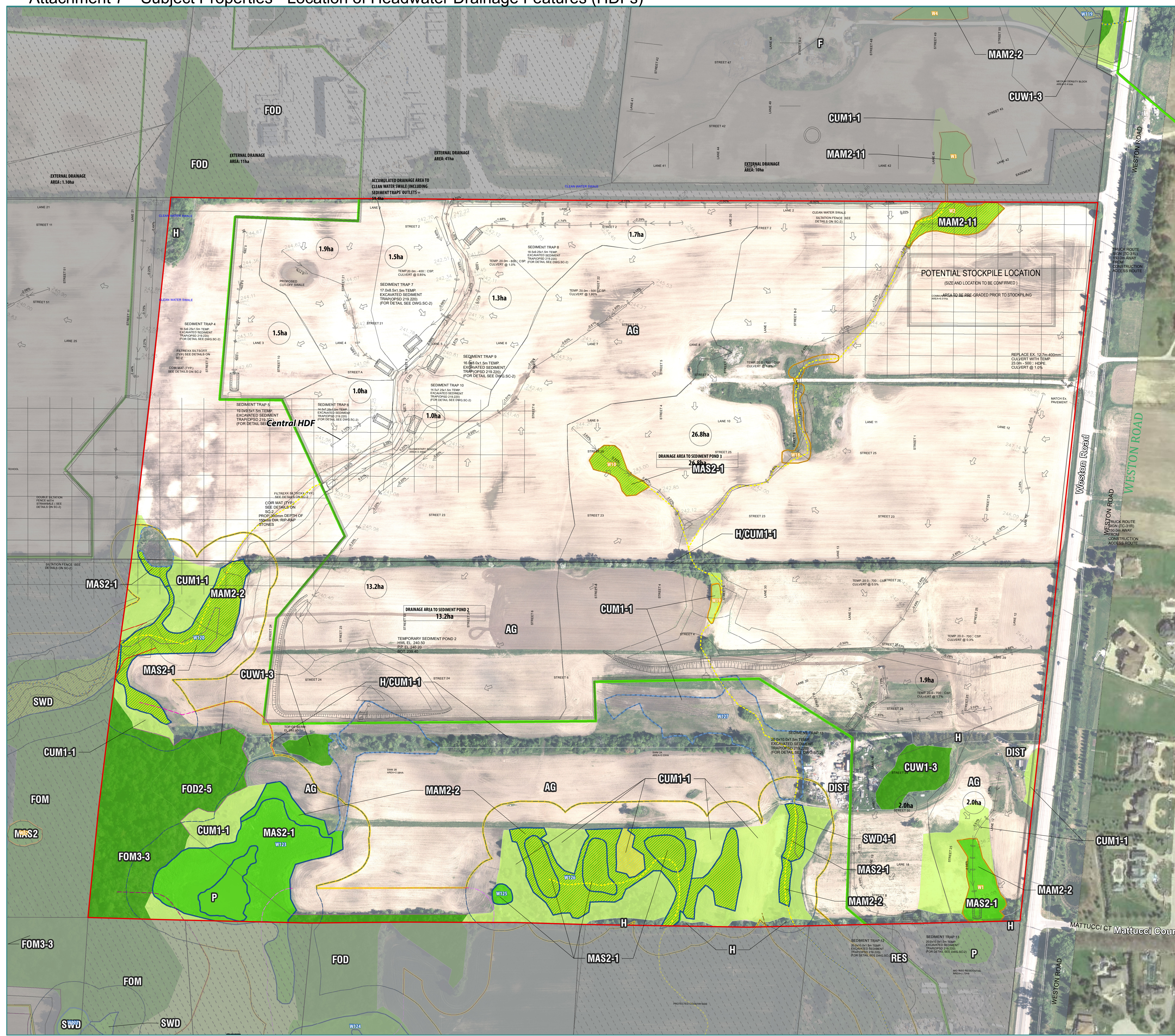


# 28E Developments & 1212763 Topsoil Stripping Permit Applications



## LEGEND

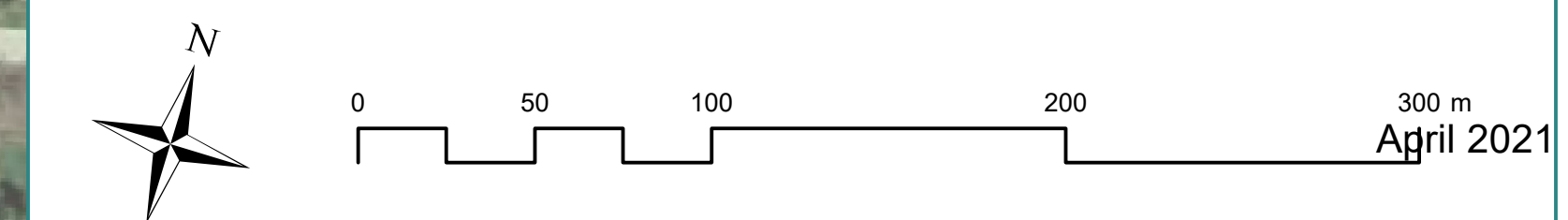
- Subject Lands
  - 2013ACAD-4913-4959-SC-Stage 1 Base - Option 3 (Working Outside GreenBelt).dwg
  - Greenbelt
  - MNRF East Humber River Wetland Complex (Significant Wetland)
  - MNRF Wetlands (Status to be Determined)
  - Ecological Land Classification
  - Meadow
  - Wetland
  - Woodland
  - Redside Dace Contributing Habitat (Headwater Drainage Feature / Watercourse)
  - Redside Dace Contributing Habitat (Wetlands)
  - Wetland Under Cultivation
  - Permanent or Intermittent Stream
  - Significant Woodland (staked November 13, 2014 by TRCA and Savanta Inc.)
  - Meander Belt (Geomorphix 2015, updated 2021)
- Natural Feature Vegetation Protection Zones**
- 30 m from Significant Woodland (not staked)
  - 30 m from Candidate Significant Woodland (not staked)
  - 30 m from Significant Woodland (staked)
  - 30 m from Fish Habitat
  - 30 m from Wetland Edge
  - Limit of Natural Features

## ELC LEGEND

- |  |  |
|--|--|
| <b>MIXED FOREST</b>  | <b>CULTURAL</b>                                  |
| FOM Mixed Forest   | CUM Old-field Cultural Meadow                    |
| FOM3-3* Dry-Fresh Hardwood-Hemlock Mixed Forest                        | CUM1-1 Dry-Moist Old Field Meadow                |
| FOM6-1 Fresh-Moist Sugar Maple - Hemlock Mixed Forest                  | CUT1-7* Mixed Cultural Thicket                   |
|  | CUM Cultural Woodlot                             |
|  | CUM1-3* Mixed Cultural Woodland                  |
| <b>DECIDUOUS FOREST</b>  | <b>SWAMP</b>                                     |
| FOD Deciduous Forest   | SWD Deciduous Swamp                              |
| FOD2-5* Dry-Fresh Hickory-Basswood Deciduous Forest                    | SWD4-1 Willow Mineral Deciduous Swamp            |
| FOD4-4* Dry-Fresh White Ash- Sugar Maple-Black Walnut Deciduous Forest |  |
| FOD5-2 Dry-Fresh Sugar Maple - Beech Deciduous Forest                  | <i>*Type not listed in Southern Ontario ELC.</i> |
| <b>MARSH</b>   | <b>AG</b> Agricultural                           |
| MA Marsh   | COM Commercial                                   |
| MAM2 Mineral Meadow Marsh  | DIST Disturbed                                   |
| MAM2-2 Reed-canary Grass Mineral Meadow Marsh                          | F Farm   |
| MAM2-10 Forb Mineral Meadow Marsh                                      | H Hedgerow                                       |
| MAM2-11* Mixed Mineral Meadow Marsh                                    | IND Industrial                                   |
| MAS Shallow Marsh  | P Pond   |
| MAS2-1 Cattail Mineral Shallow Marsh                                   | RES Residential                                  |

## DRAWING 3

## Natural Features



Sources: Aerial Photography, First Base Solutions, 2017.  
Contains information licensed under the Open Government Licence - Ontario.