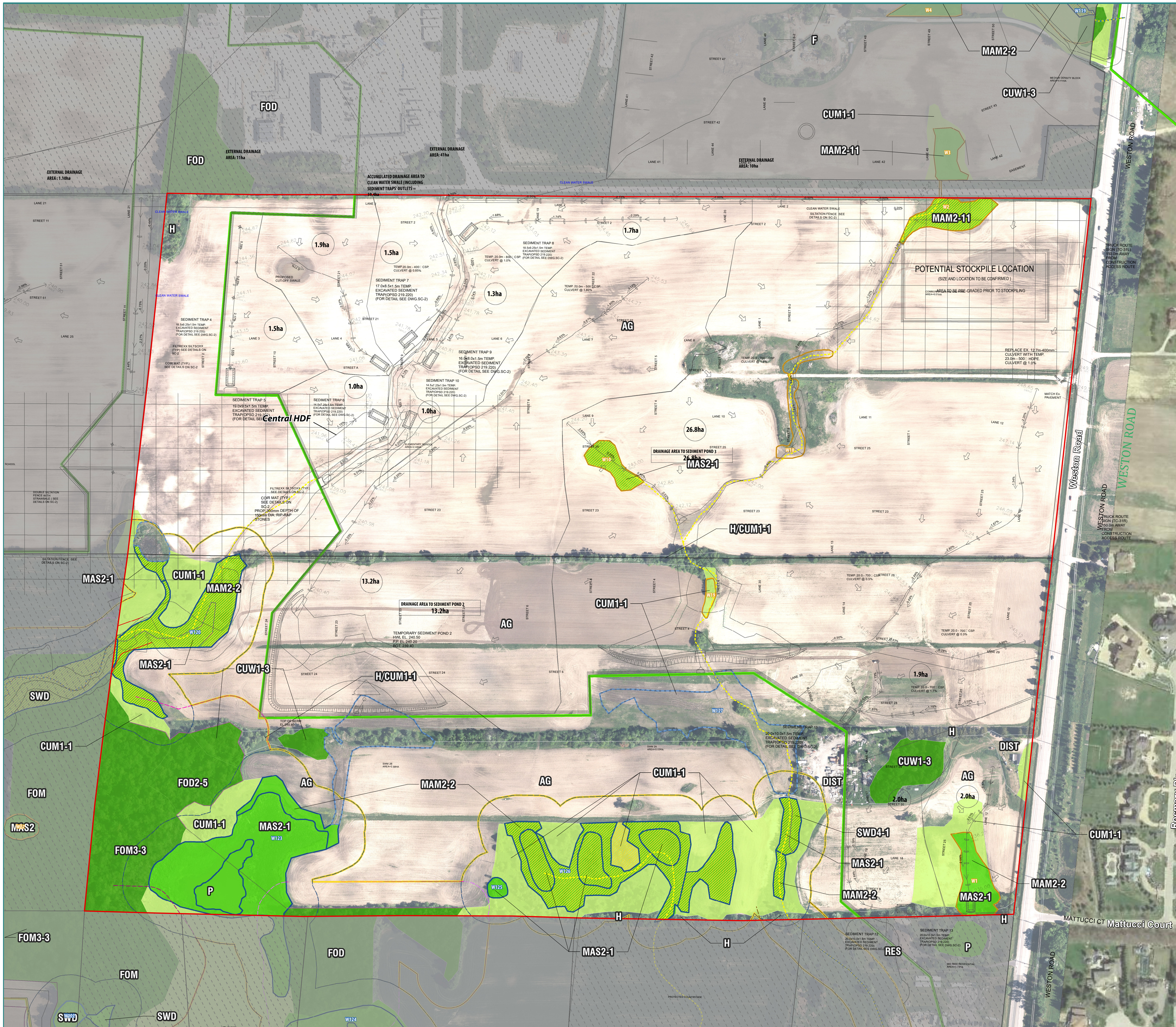


# 28E Developments & 1212763 Topsoil Stripping Permit Applications



## LEGEND

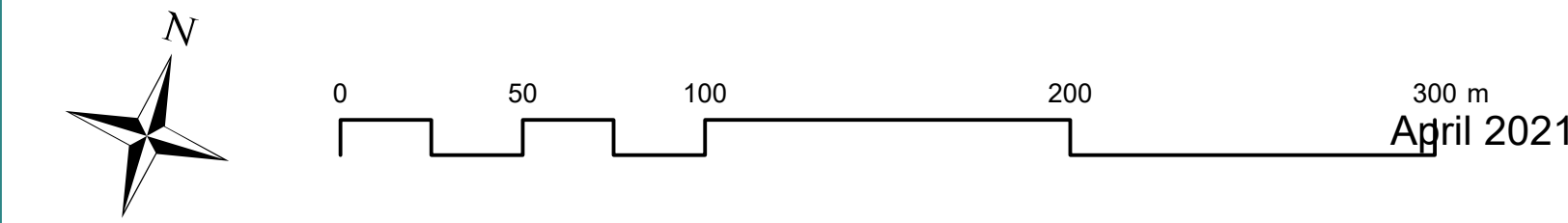
- Subject Lands
  - 2013ACAD-4913-4959-SC-Stage 1 Base - Option 3 (Working Outside GreenBelt).dwg
  - Greenbelt
  - MNRF East Humber River Wetland Complex (Significant Wetland)
  - MNRF Wetlands (Status to be Determined)
  - Ecological Land Classification
  - Meadow
  - Wetland
  - Woodland
  - Redside Dace Contributing Habitat (Headwater Drainage Feature / Watercourse)
  - Redside Dace Contributing Habitat (Wetlands)
  - Wetland Under Cultivation
  - Permanent or Intermittent Stream
  - Significant Woodland (staked November 13, 2014 by TRCA and Savanta Inc.)
  - Meander Belt (Geomorphix 2015, updated 2021)
- Natural Feature Vegetation Protection Zones**
- 30 m from Significant Woodland (not staked)
  - 30 m from Candidate Significant Woodland (not staked)
  - 30 m from Significant Woodland (staked)
  - 30 m from Fish Habitat
  - 30 m from Wetland Edge
  - Limit of Natural Features

## ELC LEGEND

<b>MIXED FOREST</b>	<b>CULTURAL</b>
FOM Mixed Forest	CUM Old-field Cultural Meadow
FOM3-3* Dry-Fresh Hardwood-Hemlock Mixed Forest	CUM1-1 Dry-Moist Old Field Meadow
FOM6-1 Fresh-Moist Sugar Maple - Hemlock Mixed Forest	CUT1-7* Mixed Cultural Thicket
	CUW Cultural Woodlot
	CUW1-3* Mixed Cultural Woodland
<b>DECIDUOUS FOREST</b>	<b>SWAMP</b>
FOD Deciduous Forest	SWD Deciduous Swamp
FOD2-5* Dry-Fresh Hickory-Basswood Deciduous Forest	SWD4-1 Willow Mineral Deciduous Swamp
FOD4-4* Dry-Fresh White Ash- Sugar Maple-Black Walnut Deciduous Forest	
FOD5-2 Dry-Fresh Sugar Maple - Beech Deciduous Forest	<i>*Type not listed in Southern Ontario ELC.</i>
<b>MARSH</b>	<b>AG</b> Agricultural
MA Marsh	COM Commercial
MAM2 Mineral Meadow Marsh	DIST Disturbed
MAM2-2 Reed-canary Grass Mineral Meadow Marsh	F Farm
MAM2-10 Forb Mineral Meadow Marsh	H Hedgerow
MAM2-11* Mixed Mineral Meadow Marsh	IND Industrial
MAS Shallow Marsh	P Pond
MAS2-1 Cattail Mineral Shallow Marsh	RES Residential

## DRAWING 3

### Natural Features



Sources: Aerial Photography, First Base Solutions, 2017.  
Contains information licensed under the Open Government Licence - Ontario.