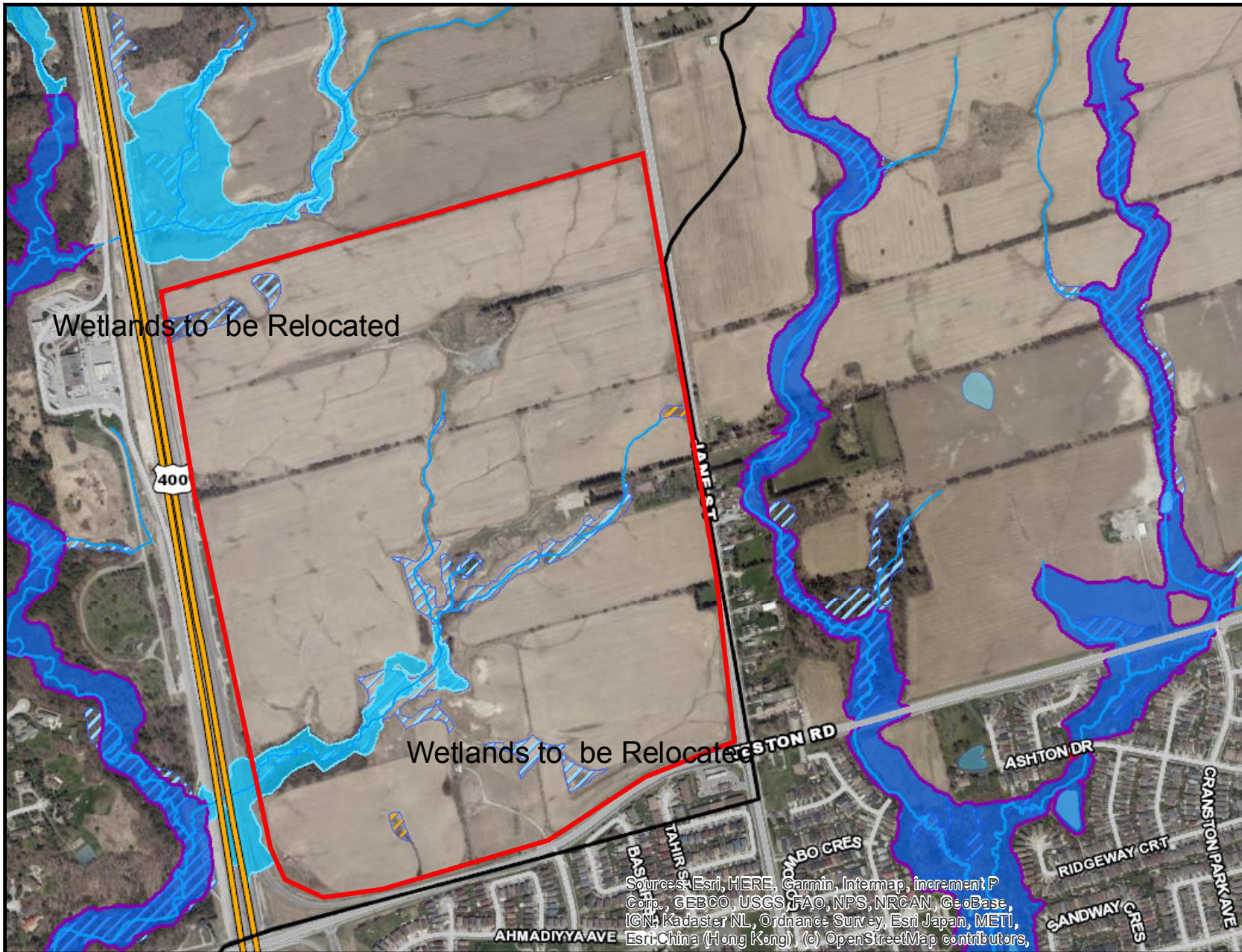


# Attachment #1 - Location Map



**Legend**

- Municipalities
- TRCA\_Jurisd...
- Highway
- Major Road
- Local Road
- Lake Ontario
- Waterbodies > 9028

**watercourse\_trca**

- <all other values>
- Regulated
- Unregulated/...

**Floodline**

- Engineered
- Estimated
- Draft
- Spill
- From Development Application
- Approximate Closure
- Closed at Map Limit
- Update Pending

**Floodplain**

- Engineered
- Estimated

**SPA Boundary**

- SPA Boundary
- Two Zone Area

**Wetlands\_MNR**

- Provincially Significant
- Locally Significant
- Not Evaluated

**Color Key:**

- Red: Band\_1
- Green: Band\_2
- Blue: Band\_3

Sources: Esri, HERE, Garmin, Intermap, increment P Corp., GEBCO, USGS, FAO, NPS, NRCAN, GeoBase, IGN, Kadaster NL, Ordnance Survey, Esri Japan, METI, Esri China (Hong Kong), (c) OpenStreetMap contributors,

**Disclaimer:**  
 The Data used to create this map was compiled from a variety of sources & dates. The TRCA, takes no responsibility for errors or omissions in the data and retains the right to make changes & corrections at anytime without notice. For further information about the data on this map, please contact the TRCA GIS Department (416) 661-6600.  
 May not be reproduced without permission.  
 This is not a plan of survey.  
 Produced by Toronto and Region Conservation Authority under Licence with the Ministry of Natural Resources  
 Orthophoto - 2011 First Base Solutions  
 © Queen's Printer for Ontario.



Date: 2021-04-01  
 Author: Web AppBuilder for ArcGIS





Toronto and Region  
**Conservation  
 Authority**