

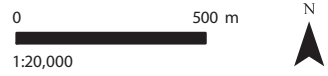
Project 1906057

NOTES:
 1. Coordinate System: NAD 1983 UTM Zone 17N.
 2. Base features produced under license with the Ontario Ministry of Natural Resources and Forestry © Queen's Printer for Ontario, 2020.

- Legend**
- Subject Lands
 - Highway
 - Road
 - Railway
 - Hydro Line
 - Watercourse
 - Wetland - Not evaluated per OWES
 - Waterbody
 - Wooded Area
 - Municipal Boundary, Lower/Single Tier
 - Municipal Boundary, Upper Tier

Rainbow Creek Environmental Impact Study
 611428 Ontario Ltd.

Figure 1 Project Location and Background Information



SAVANTA
 A GEI Company