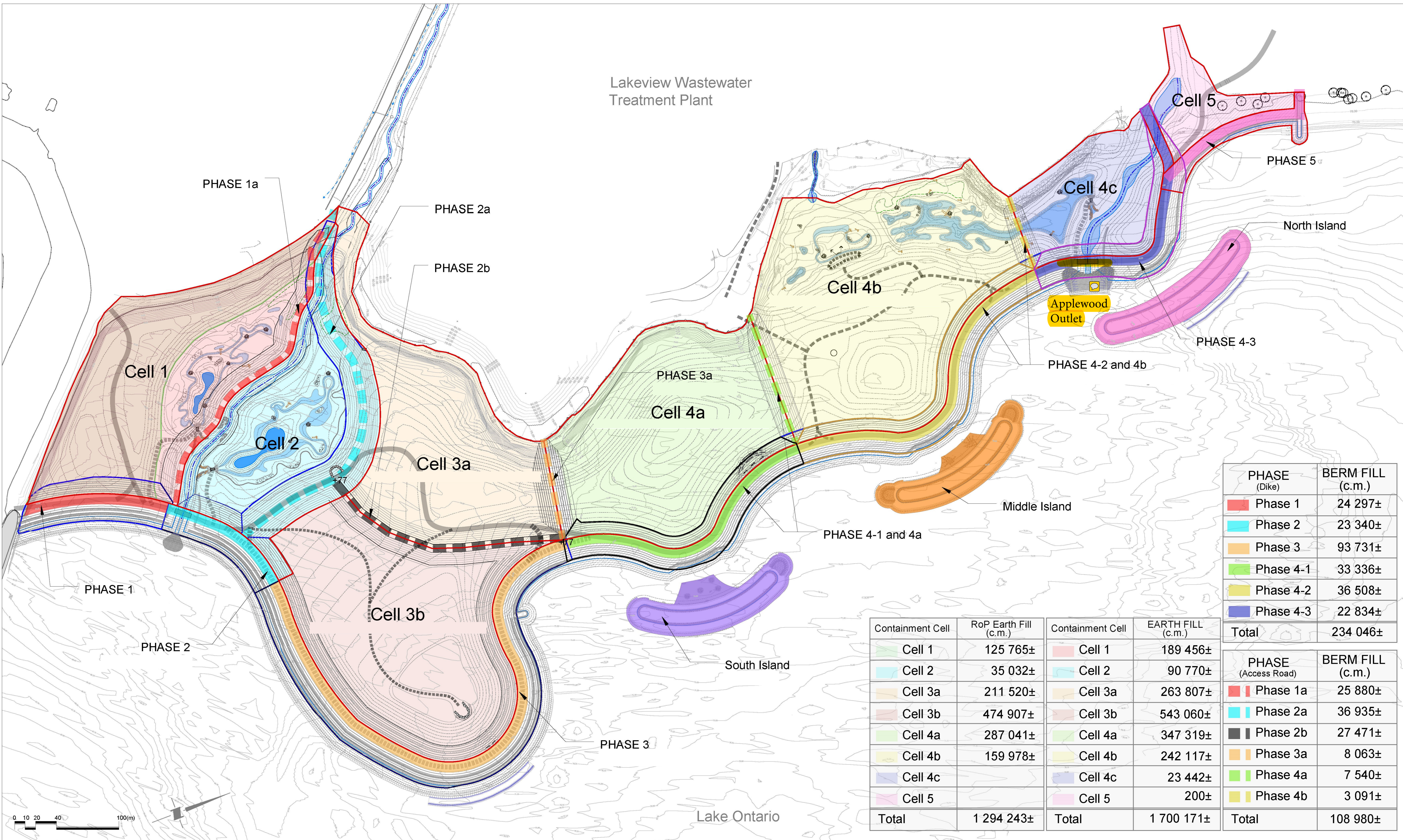


Lakeview Wastewater Treatment Plant



PHASE (Dike)	BERM FILL (c.m.)
Phase 1	24 297±
Phase 2	23 340±
Phase 3	93 731±
Phase 4-1	33 336±
Phase 4-2	36 508±
Phase 4-3	22 834±
<b>Total</b>	<b>234 046±</b>

Containment Cell	RoP Earth Fill (c.m.)	Containment Cell	EARTH FILL (c.m.)
Cell 1	125 765±	Cell 1	189 456±
Cell 2	35 032±	Cell 2	90 770±
Cell 3a	211 520±	Cell 3a	263 807±
Cell 3b	474 907±	Cell 3b	543 060±
Cell 4a	287 041±	Cell 4a	347 319±
Cell 4b	159 978±	Cell 4b	242 117±
Cell 4c		Cell 4c	23 442±
Cell 5		Cell 5	200±
<b>Total</b>	<b>1 294 243±</b>	<b>Total</b>	<b>1 700 171±</b>

PHASE (Access Road)	BERM FILL (c.m.)
Phase 1a	25 880±
Phase 2a	36 935±
Phase 2b	27 471±
Phase 3a	8 063±
Phase 4a	7 540±
Phase 4b	3 091±
<b>Total</b>	<b>108 980±</b>

0 10 20 40 100(m)

Revised Jan. 24, 2018



*SUBJECT TO CHANGE*

# Lakeview Waterfront Connection

Containment Cell & Access Berm - Fill Volume Calculation