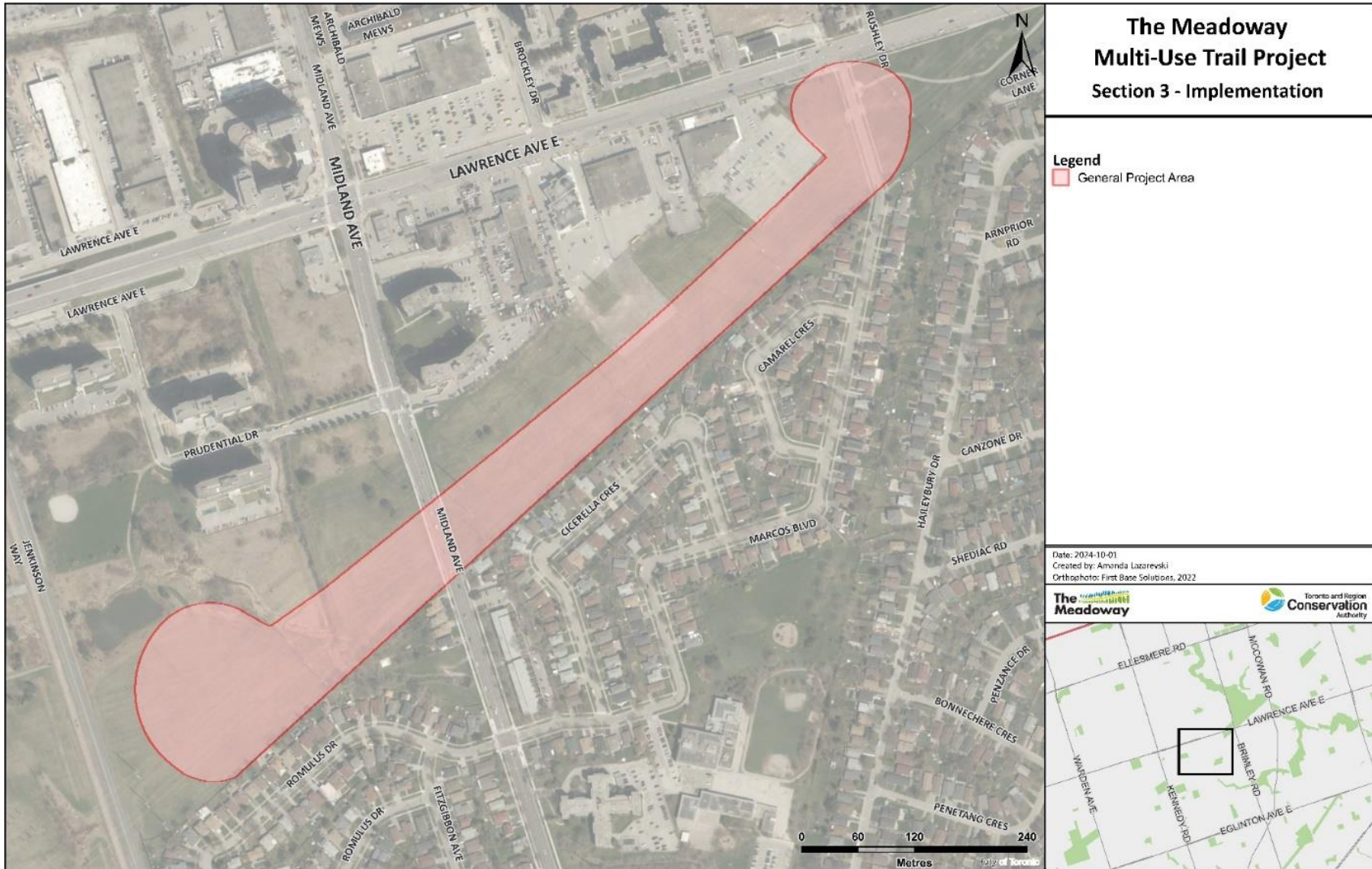


Attachment 2: The Meadoway, Section 3 – General Project Area



Disclaimer: The data used to create this map was compiled from a variety of sources & dates. The TRCA takes no responsibility for errors or omissions in the data and retains the right to make changes & corrections at anytime without notice. For further information about the data on this map, please contact the TRCA Restoration and Infrastructure Division, (416) 661-6600.