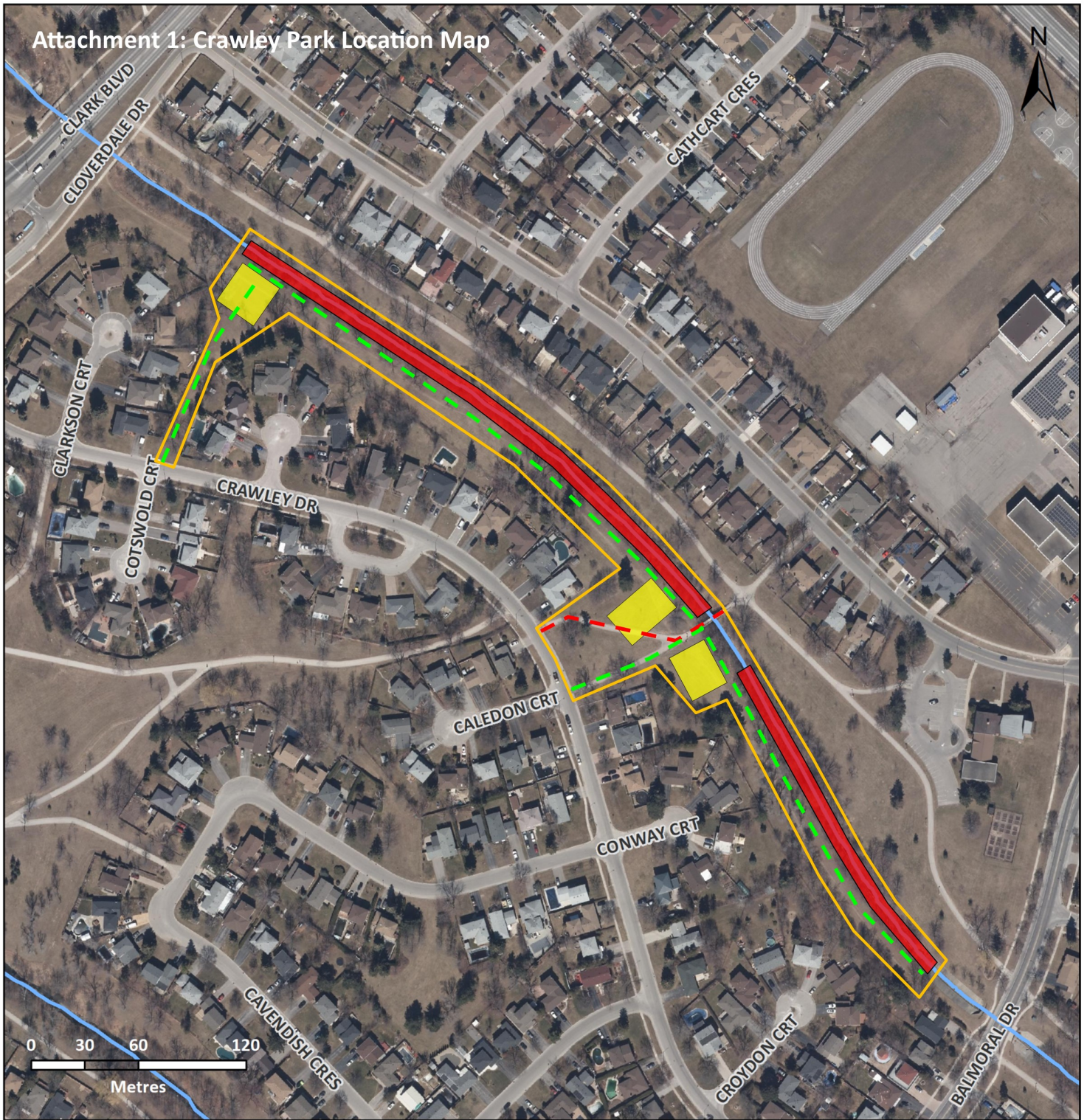


Attachment 1: Crawley Park Location Map



Crawley Park Sanitary Infrastructure Protection Project

Crawley Drive [East of Dixie Road and Queen Street], Brampton

- ★ Location
- Closed
- Work Access
- Staging Area
- Work Area
- Project Limits
- ~ Watercourse

Date: 7/23/2024
 Created by: Erosion Risk Management
 Orthophoto: First Base Solutions, 2018.

Disclaimer: The data used to create this map was compiled from a variety of sources & dates. The TRCA takes no responsibility for errors or omissions in the data and retains the right to make changes & corrections at anytime without notice. For further information about the data on this map, please contact the TRCA Restoration and Infrastructure Division. (416) 661-6600.

