

Sustainable Communities Overview

Regional Watershed Alliance, Meeting February 28, 2024

Sustainable Communities

We enhance people's well being by fostering vibrant and thriving urban environments.

We do this by advancing sustainable, resilient neighbourhoods and economies through multi-stakeholder collaboration, multi-objective action and long-term thinking.



A Program of Toronto and Region Conservation Authority

**Sustainable Neighbourhood
Action Program**



PPG is

A community of leaders
advancing environmental
action and economic
prosperity across the GTA.



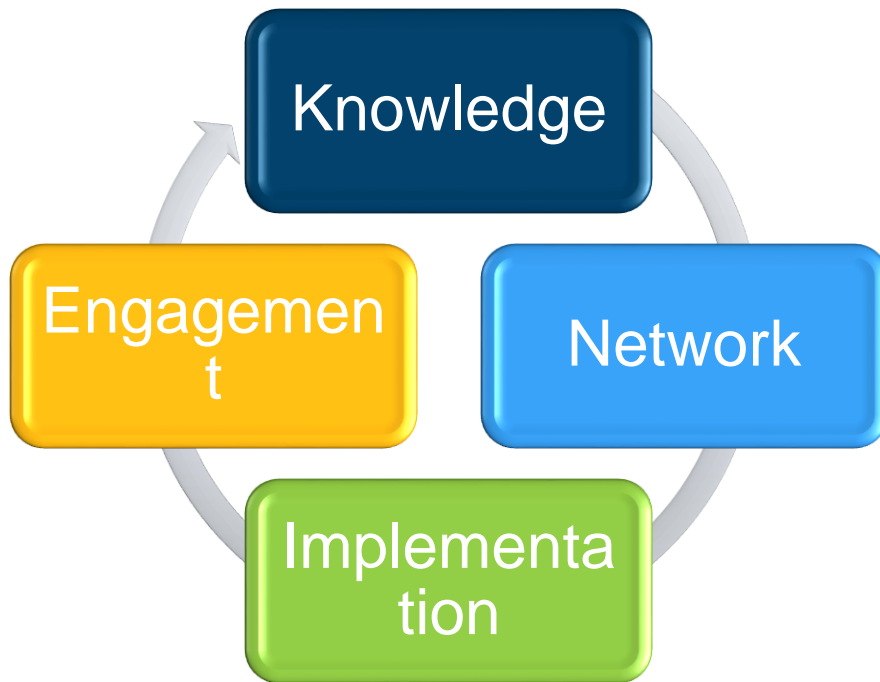
Toronto Pearson



PPG 2023 Member Snapshot



PPG helps organizations achieve their sustainability goals



Working together to achieve:

- Water Stewardship
- Energy Management & Low Carbon Transportation
- Circular Economy
- Community & Employee Engagement



PPG helps municipalities achieve their sustainability and climate goals



Support our municipal partners in achieving their corporate goals



Supporting businesses to contribute to achieving the climate goals of the region as a whole



PPG as a delivery agent and/or communications partner for municipal programs



Fleet Decarbonization



MHDV Fleets

Futureproof your Fleet launched



Build market confidence

Increase awareness of technologies



Engage fleet managers

Social campaign target 12,000 impressions



Increase knowledge

7 events planned
Q1/24 – Q1/25



Provide fleet managers & their teams with knowledge, resources & networks to decarbonize their fleets.

Corporate Flood and Heat Risk



Partners

CVC
STEP



Site Assessments

Completed 3 in
Mississauga
since 2022



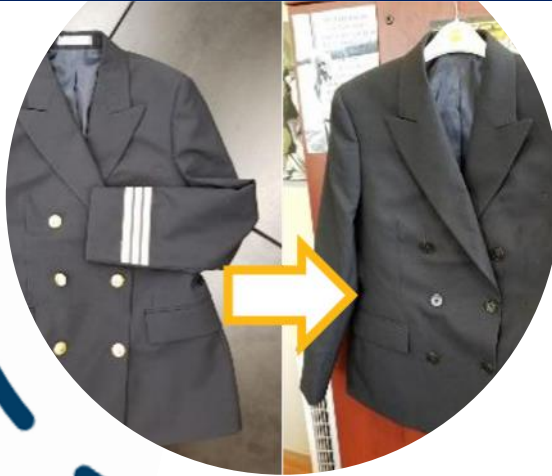
Increase knowledge

4 Water
Management
Modules
released



Provide building owners & managers with landscape plans, stormwater management analysis, training and incentives to implement flood and heat risk mitigation projects.

Circular Economy



Divert waste from landfill
18,606 tonnes since 2013



Extend economic value of materials
over \$3M since 2019



Engage employees
100K+ reached since 2016



Increase knowledge
372 learner hours since 2022



Reduce waste generation, divert waste from landfill and promote the circular economy.

Tower Decarbonization & Climate Resiliency



Potential Partners

Municipalities
NGOs
Industry



Best Practices

Learned in SNAP
over 15 years



Decarbonization

Opportunities for
GHG emission
reductions



Climate Resiliency

Stormwater
Urban Ag, etc.



Empower property managers with integrated programs for decarbonization, climate resilience, enhancing property value, and boosting tenant satisfaction.

How RWA can support PPG

- Attend and be involved in planned PPG and partner events – partnersinprojectgreen.com/events
- Connect potential new PPG members to TRCA staff
- Identify opportunities that align with PPG priorities
- Share information on PPG membership benefits with your business, municipal staff and other networks
- Provide input and advice on key implementation issues and opportunities based on your knowledge and experience
- Amplify social media posts



Sustainable Neighbourhood Action Program (SNAP)

A neighbourhood-based solution for sustainable urban renewal and climate action



Develops and implements
Action Plans for all land uses

Brings together technical objectives
with residents' priorities

Works with local groups and builds
partnerships with all sectors to make
implementation happen

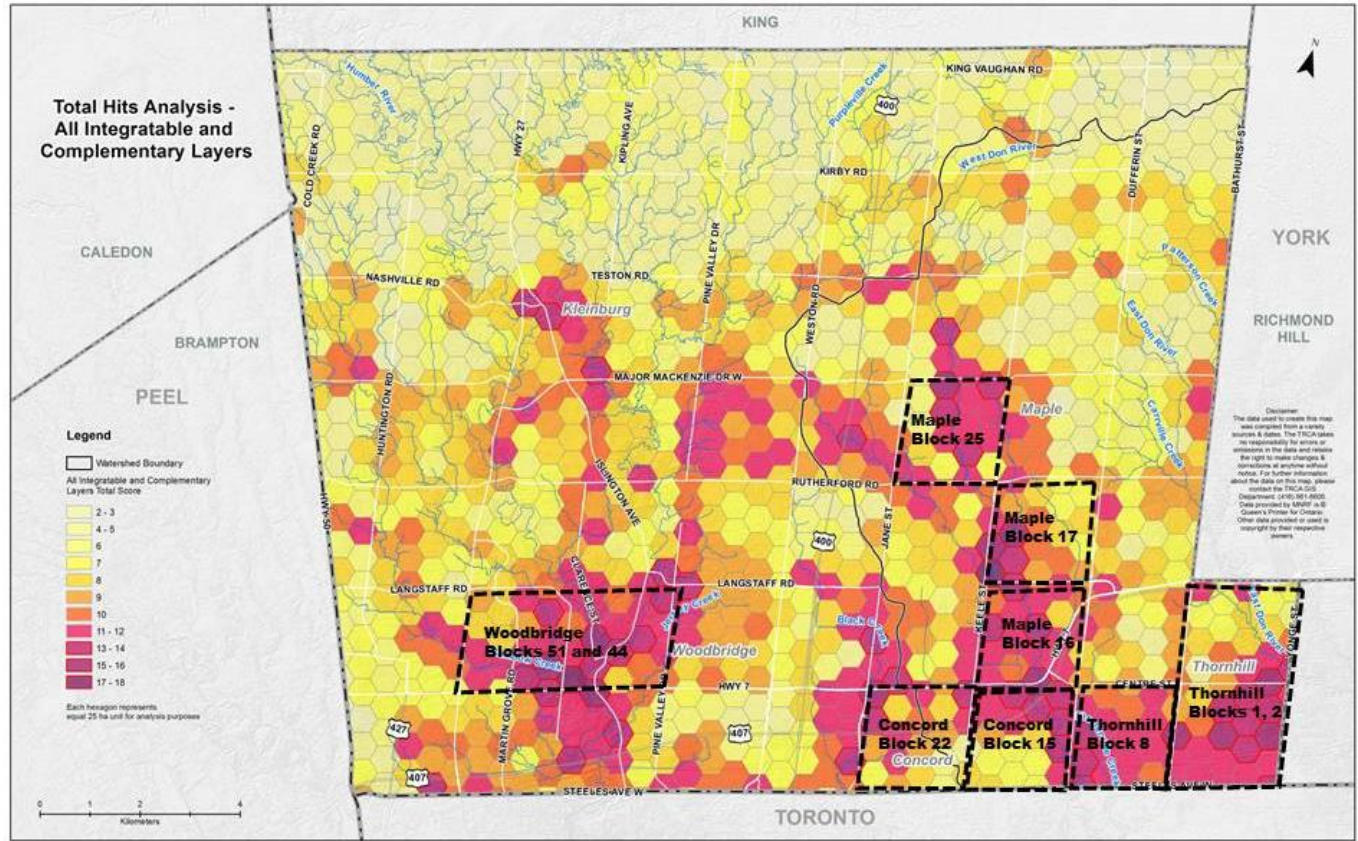
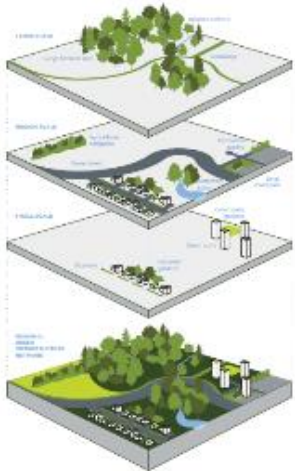
SNAP's Sustainability Framework



Neighbourhood Screening



25 ha Hexagonal Units



A Growing Network of SNAPs



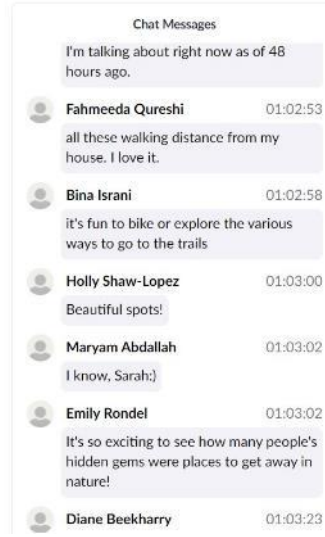
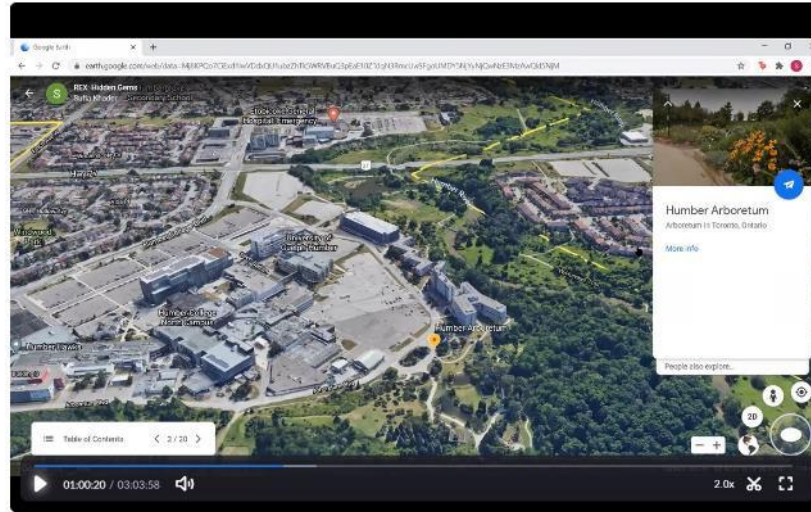
16
Neighbourhoods

11
Municipalities

100+
Implementation
Collaborators and
Partners

14
years running

Neighbourhood action planning- innovative engagement approaches





Home Renovation



Public Infrastructure Renewal

MUR & ICI Renewal

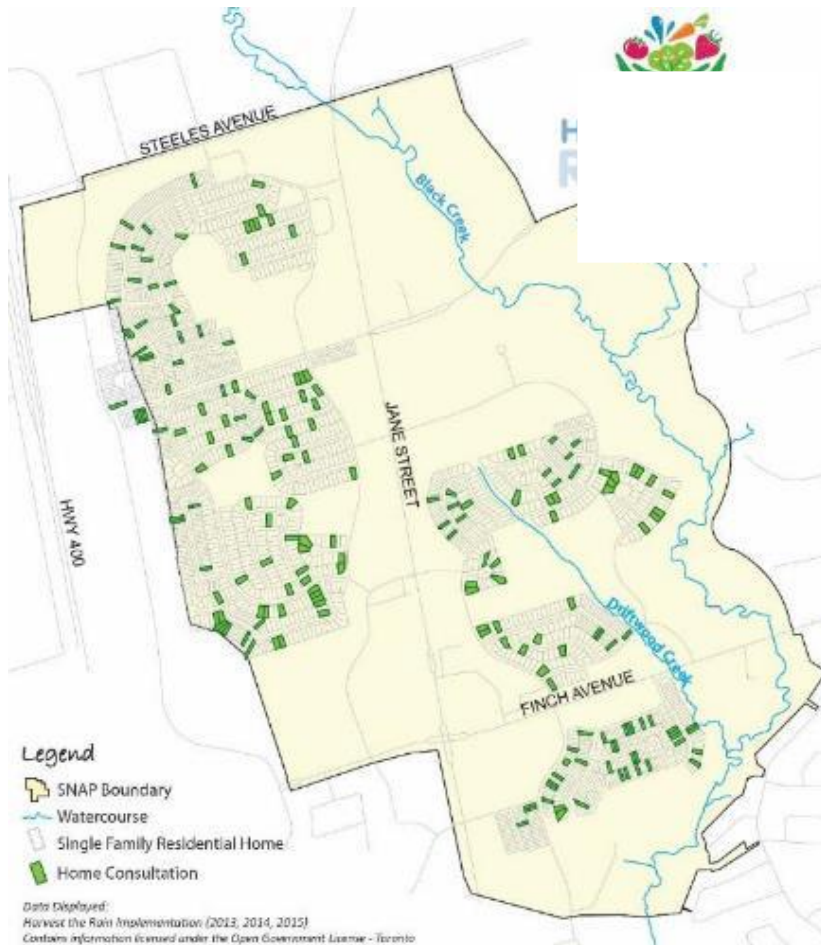


Typical SNAP Action Areas

Community Resilience



SNAP Action Areas: Home Retrofit Programs deepen engagement and help homeowners take multiple actions



For example, **381 homes** participated in the Black Creek SNAP, implementing **1,229 actions**.

- **30%** implemented **energy retrofits**
- **93%** implemented **SWM actions**
- **49%** implemented **flood prevention**
- **59%** planted a **tree**

SNAP Action Areas: Public Infrastructure Renewal Projects are Reimagined to Maximize Sustainability & Resilience



SNAP Action Areas: Revitalization of Multi-unit Residential, Institutional and Commercial Properties addresses environmental, resilience and socio-economic themes





SNAP Action Areas:
Building community connections,
local leadership and skills through
action-oriented programming and
events



Outcomes of Focus



Expanded **Urban Forest and Biodiversity**; reduced heat stress



Improved **Rainwater Management and Flood Risk Reduction**



Climate mitigation



Health: Access to Nature, Food, Active Living and Community Connections



Employment, Job Skills and Community Capacity

Discussion: Green Infrastructure Maintenance within SNAP Neighbourhoods

SNAP GI Maintenance Models

- **Resident champions trained and hired to maintain GI:** requires significant staff resources for training, coordination, hiring and hands on involvement; sometimes knowledgeable residents move on
- **Volunteer events:** requires significant staff resources for recruitment training, coordination and hands on support at events
- **Municipal-led (on public realm):** Municipal operations departments are reluctant to take on maintenance of LIDs and pollinator gardens (they are under-resourced and/or don't have in-house knowledge).
- **Private property owner-led:** Requires significant resources in training. Turnover of trained landscaping contractors or maintenance staff results in the gardens dying
- **TRCA-led:** requires stable multi-year funding to grow the capacity of our Restoration Services team to address a growing number of projects
- **NGO/ Social enterprise-led:** requires stable multi-year funding

Discussion Questions:

1. Do you know of any successful GI maintenance models that could be applied to the growing number of projects within the SNAP Neighbourhoods?
2. How can GI maintenance be streamlined, while keeping the community involved?
3. Who should be the players in GI maintenance (on public and private land)? What should be their roles?
4. How should this maintenance work be funded?

Thank you!

www.trca.ca

