



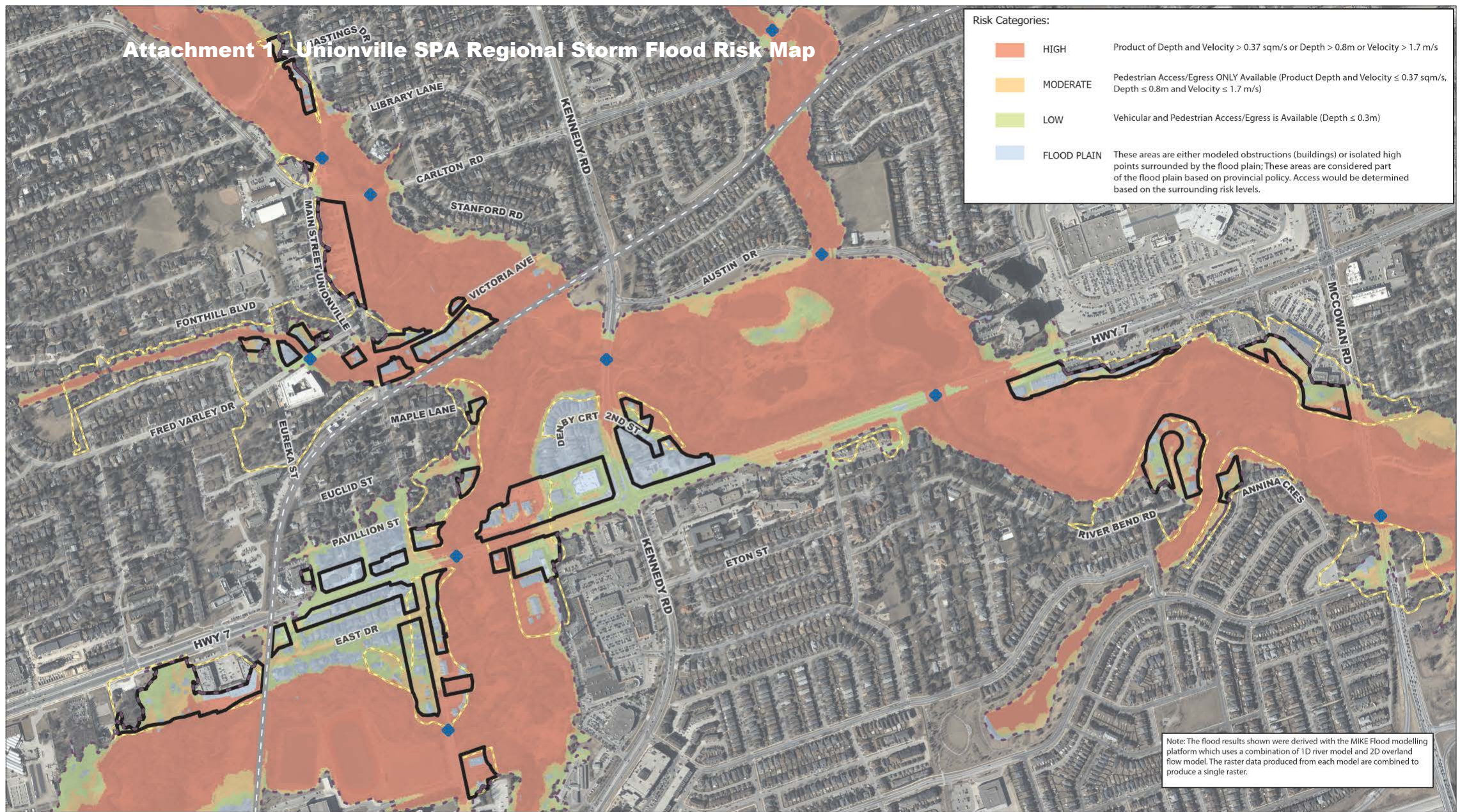


Attachment 1 - Unionville SPA Regional Storm Flood Risk Map

Risk Categories:

	HIGH	Product of Depth and Velocity > 0.37 sqm/s or Depth > 0.8m or Velocity > 1.7 m/s
	MODERATE	Pedestrian Access/Egress ONLY Available (Product Depth and Velocity ≤ 0.37 sqm/s, Depth ≤ 0.8m and Velocity ≤ 1.7 m/s)
	LOW	Vehicular and Pedestrian Access/Egress is Available (Depth ≤ 0.3m)
	FLOOD PLAIN	These areas are either modeled obstructions (buildings) or isolated high points surrounded by the flood plain; These areas are considered part of the flood plain based on provincial policy. Access would be determined based on the surrounding risk levels.



Note: The flood results shown were derived with the MIKE Flood modelling platform which uses a combination of 1D river model and 2D overland flow model. The raster data produced from each model are combined to produce a single raster.



Toronto and Region Conservation Authority
 Special Policy Area
 - UNIONVILLE -
 Regional Storm Event - Risk

Legend:

-  SPA Boundary - DRAFT
-  SPA Boundary - Existing
-  Flood Line - Regional
-  Railway Line
-  Bridge Deck
 * at these locations bridge decks are not included in the model surface to allow for continuous flow.

