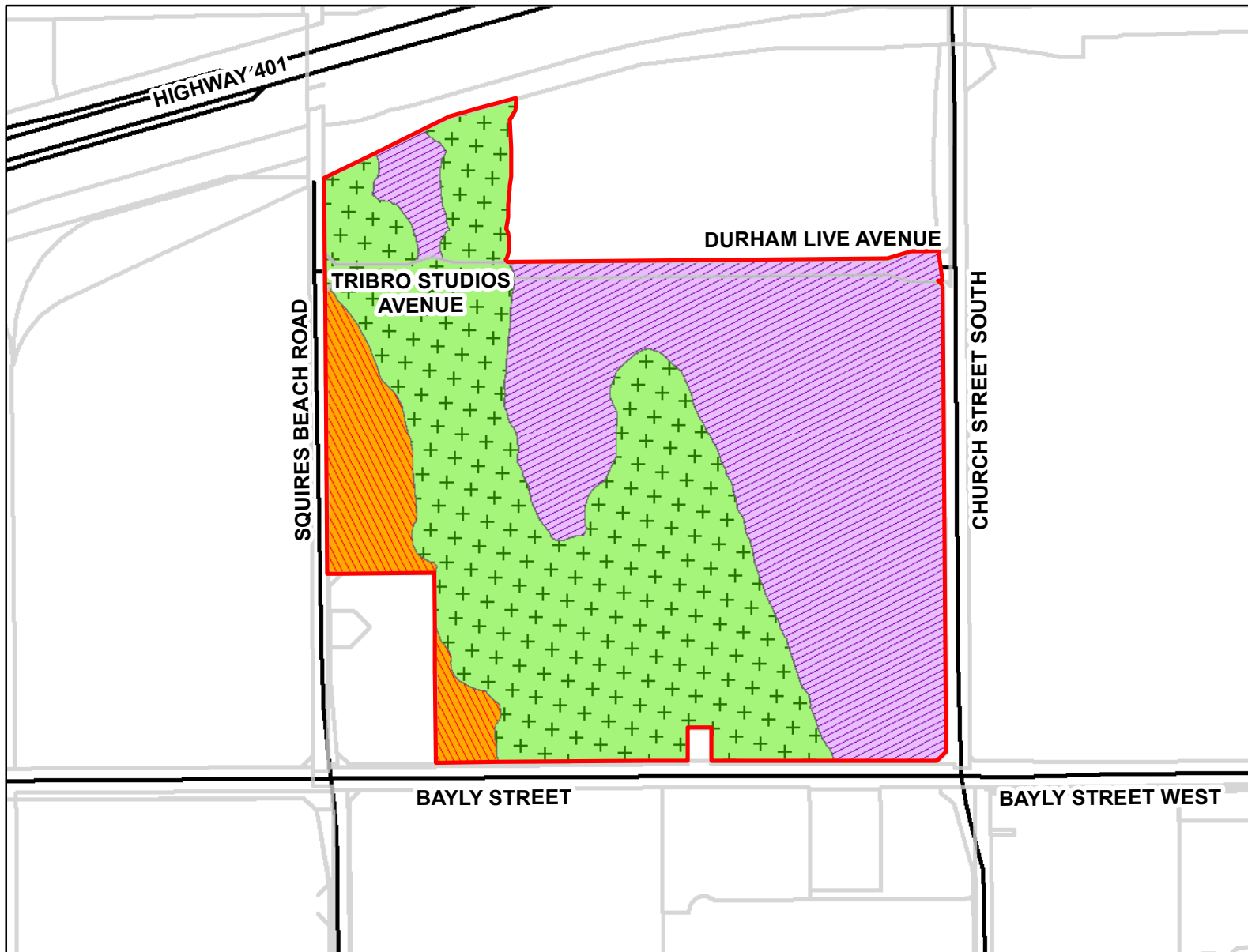


Part of Lots 15 and 16, Concession 1 City of Pickering, Regional Municipality of Durham



MAP No. 265

Map filed at the office of the
Ontario Ministry of Municipal
Affairs and Housing, 777 Bay St.,
Toronto, Ontario,

Planning Act

Ontario Regulation: 515/21

Date: July 2, 2021

Original Signed By: Assistant Deputy Minister
Municipal Services Division
Ministry of Municipal Affairs and Housing

LEGEND

- Land Subject to Zoning Order
- Parcels
- Mixed Employment Zone
- Mixed Use Major Tourist and Entertainment Zone
- Natural Heritage and Open Space Zone
- Roads

0 60 120 240
Metres



Map Description:

This is map no. 265 referred to in a Minister's Zoning Order. It shows lands which are located in Part of Lots 15 and 16, Concession 1, in the City of Pickering, in the Regional Municipality of Durham. We are committed to providing accessible customer service (<https://www.ontario.ca/page/accessible-customer-service-policy>).

On request, we can arrange for accessible formats and communications supports. Please contact MMAH by email (mininfo@ontario.ca) for regulation details.

THIS IS NOT A PLAN OF SURVEY

Information provided by the Ministry of Municipal
Affairs and Housing, under licence with the
Ministry of Natural Resources.
© 2021, Queen's Printer for Ontario.